

2 Aldermanbury Square

lendlease

NEWSLETTER

OCTOBER 2024

Dear Neighbours,

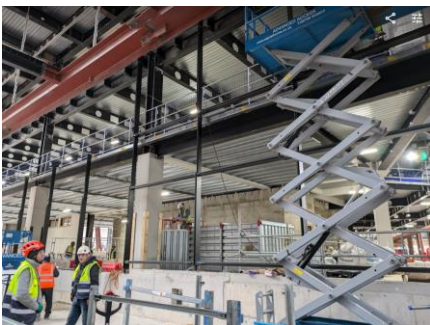
Welcome to our regular update on the 2 Aldermanbury development from Lendlease. This regular newsletter will keep you up to date with the progress we have made, what we will be working on in the coming months, community events you can get involved with and how to get in touch.

Construction Update

During September and into October there has been a continuation of the install of structural steel work with good progress made, steel is now being installed up to Level 11. The new bridge sections have now been installed over to 65 Basinghall Street.

All the large plant items have now been lowered into B2 and the “mole hole” has been closed up. Our twin hoists have been installed to the South elevation on Basinghall Street. This allows continued construction on the upper floors now the concrete has been poured up to level 5.

Looking ahead to October we will be making amendments to our hoarding on Basinghall Street and installing gates to allow glass deliveries to access the project. The cladding team have started to install the stick system to the East elevation and will start on the South, glass will follow this month.



Working Hours

General working hours during this time will be:

Monday – Friday: 8am – 6pm

Saturday: 9am – 2pm

Contact Us

If you have any concerns or questions, the staff listed below will be available to help, including the 24-hour on-site security team in case of any urgent issues:

Alan Webster
Simon Ranauro
24hr Security

Construction Liaison & Logistics
Snr Project Manager

07876 718963 Alan.Webster@Lendlease.com
07849 838358 Simon.Ranauro@lendlease.com
0208 826 4307