

### Dear Neighbours,

Welcome to our regular update on the 2 Aldermanbury development from Lendlease. This regular newsletter will keep you up to date with the progress we have made, what we will be working on in the coming months, community events you can get involved with and how to get in touch.

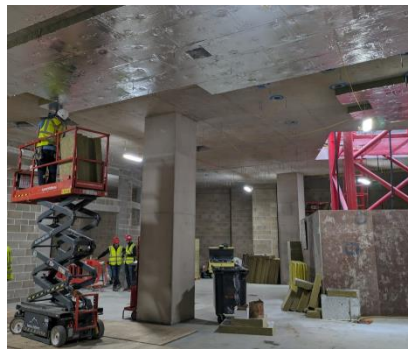
### Construction Update

- During May and June there has been a continuation of the install of structural steel work with good progress made, steel has now been installed up to Level 3. We have completed all the raking columns to both North, London Wall & South, Basinghall Street elevations. Moving forward these will be encased in concrete.

Last weekend we successfully delivered and installed the first section on the new upper walkway bridge section, which will connect over London Wall and ultimately flow through to the Guildhall.

June & July ongoing works.

- Progression of structural steel and decking. We will start levels 4 & 5 of structural steel this week.
- Basement 1 & 2 blockwork, insulation and high level preparation for services are ongoing.
- We will be working every other Saturday in June and July. Site working hours will be 9am – 2pm.



### Working Hours

General working hours during this time will be:

**Monday – Friday: 8am – 6pm**

**Saturday: 9am – 2pm**

### Contact Us

If you have any concerns or questions, the staff listed below will be available to help, including the 24-hour on-site security team in case of any urgent issues:

Alan Webster  
Simon Ranauro  
24hr Security

Construction Liaison & Logistics  
Snr Project Manager

07876 718963 [Alan.Webster@Lendlease.com](mailto:Alan.Webster@Lendlease.com)  
07849 838358 [Simon.Ranauro@lendlease.com](mailto:Simon.Ranauro@lendlease.com)  
0208 826 4307